

Siemens Campus, Erlangen



© Remmers Gruppe AG Remmers Gruppe AG

Reference data

- **Building activity**
Floor coating
- **Object type**
Parking garages
- **Object address**
, 91058 Erlangen
- **Date / Completion**
2022
- **Architect**
HIB Huber Integral Bau GmbH
- **Contractor**
Rama Industrie-Bodenbelag GmbH
- **Viewing possible?**
Yes

Description

In the south of Erlangen, a new, modern district is being built on the former Siemens research site. It features extensive green spaces and leisure areas, restaurants, shops and other services. The new construction project also includes new office buildings for Siemens AG, with associated multi-storey car park facilities.

Problem

In order to withstand the daily stresses and strains of employees' vehicles, a coating system specially designed for surfaces with heavy traffic loads was applied. The epoxy blinded coating features high chemical and mechanical resilience.

Product systems / sizes used

- › **Epoxy Primer PF**
Art. No. 1224



- › **Epoxy Color Top**
Art. No. 6191



- › **Epoxy ST 100**
Art. No. 1160



- › **Quarz 03/08 DF**
Art. No. 4406



Impressions



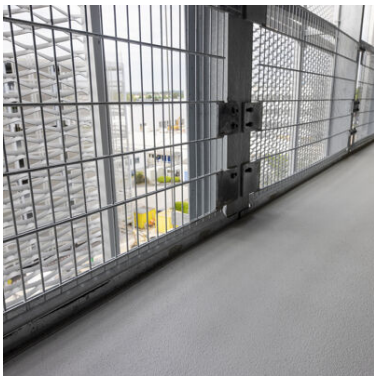
©



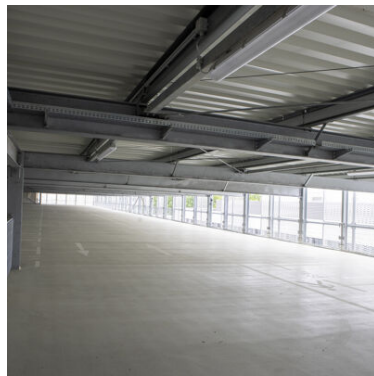
©



©



©



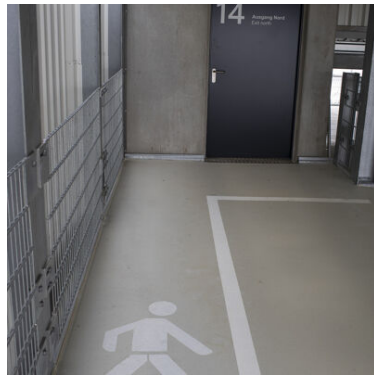
©



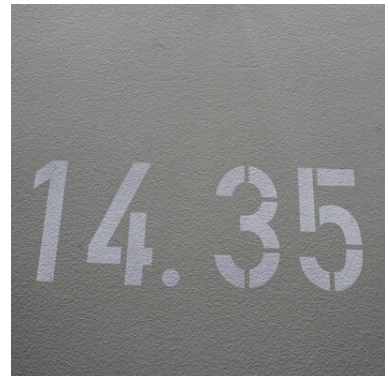
©



©



©



©



©

Reference



Further information can be found on:

https://www.remmers.co.uk/en_GB/referenceDetail/38854