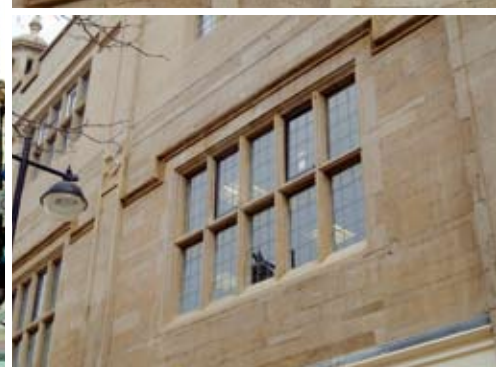


# C & G Building Society Yeovil, Somerset



The facade of the Cheltenham and Gloucester Building Society in Yeovil, was originally built using reconstituted stone for the facing blocks, the window surrounds that also hold the leaded light glazing, plus the roof level design features. The effect was to create the appearance of the local 'Yeovil Stone' which is similar to Portland Stone, but a warmer yellow colour.

The precast units were all cast with the stone facing mix placed into the moulds first, followed by the steel reinforcement and the casting concrete. Unfortunately over time the steel had started to corrode, this was where all of the facing mix and in some areas the backing concrete, had lost its protective alkalinity through natural carbonation.

To halt and repair the developing damage and to ensure that it was protected in

future, the Client's Engineers from CS2 devised a solution with Remmers Systems. Concrete Repairs Limited (CRL) were the successful contractor and they first carried out hammer testing to fully identify all of the areas in need of repair.

The damage was then broken out and the corroding steel fully exposed. This was cleaned, primed and the areas repaired with Remmers Restoration Mortar. The colour was carefully matched to blend in with the original surfaces. This advanced Remmers mortar is also easily placed and tooled, so CRL were also able to match the surface texture and profiles.

Finally, all of the surfaces were protected by applying two coats of Remmers colourless Funcosil hydrophobic impregnation, to prevent any further water ingress or steel corrosion. This was applied in a unique 'gel

formulation' which maximises the penetration of the material, but at the same time is very controllable and prevents any mess or spillages onto adjacent material surfaces or other areas.

## Project Details

### Application:

Concrete Repair and Protection

### Market:

Commercial - Offices

### Client:

Cheltenham and Gloucester Building Society

### Contractor:

Concrete Repairs Limited

