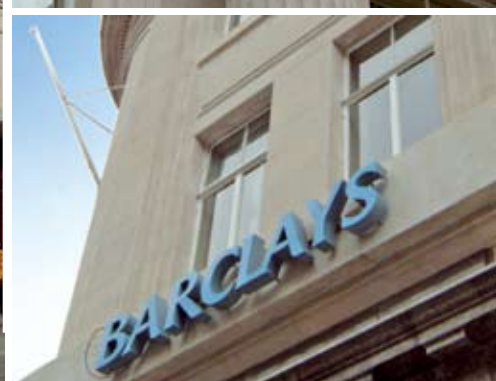


# Barclays Bank Newport, South Wales



The City Centre branch of Barclays Bank in Newport, South Wales has just undergone a comprehensive external refurbishment. The traditionally stone built Victorian building is faced with polished black granite to a dado line at street level, with the remainder of the facade, including the carved and decorative columns, in a local limestone.

At the start of the refurbishment planning, Donaldsons the managing surveyors, contacted Remmers for advice and assistance in developing the correct stone cleaning process for the different stone surfaces. All of these had a heavy build up of carbon deposits plus other dirt and grime from the traffic and exposure.

Remmers Alkutex® and Intachem® specialist stone cleaning systems were selected

as they were able to dissolve and therefore allow removal of all of the deposits, with absolutely no detriment or damage to the polished granite, or to the acid sensitive limestone surfaces.

The works were all carried out by specialist restoration contractors Pamarch 1997 Limited, who were also recommended by Remmers, because of their experience with this type of project and the use of Remmers cleaning and restoration systems. Areas found to require additional stone restoration were repaired using Remmers Restoration Mortar. This was colour matched to the original surrounding stone, with Remmers Epoxy Mortars also used to fix reinforcing dowels where required by the engineer.

Finally to protect the cleaned and restored facade from future damage and any further build up of carbon deposits, Pamarch

treated the whole surface with Remmers high performance Funcosil® SNL, a one component hydrophobic impregnation, applied by low pressure spray.

## Project Details

### Application:

Stone Cleaning and Restoration

### Market:

Commercial - Offices

### Client:

Barclays Bank

### Contractor:

Pamarch 1997 Limited

