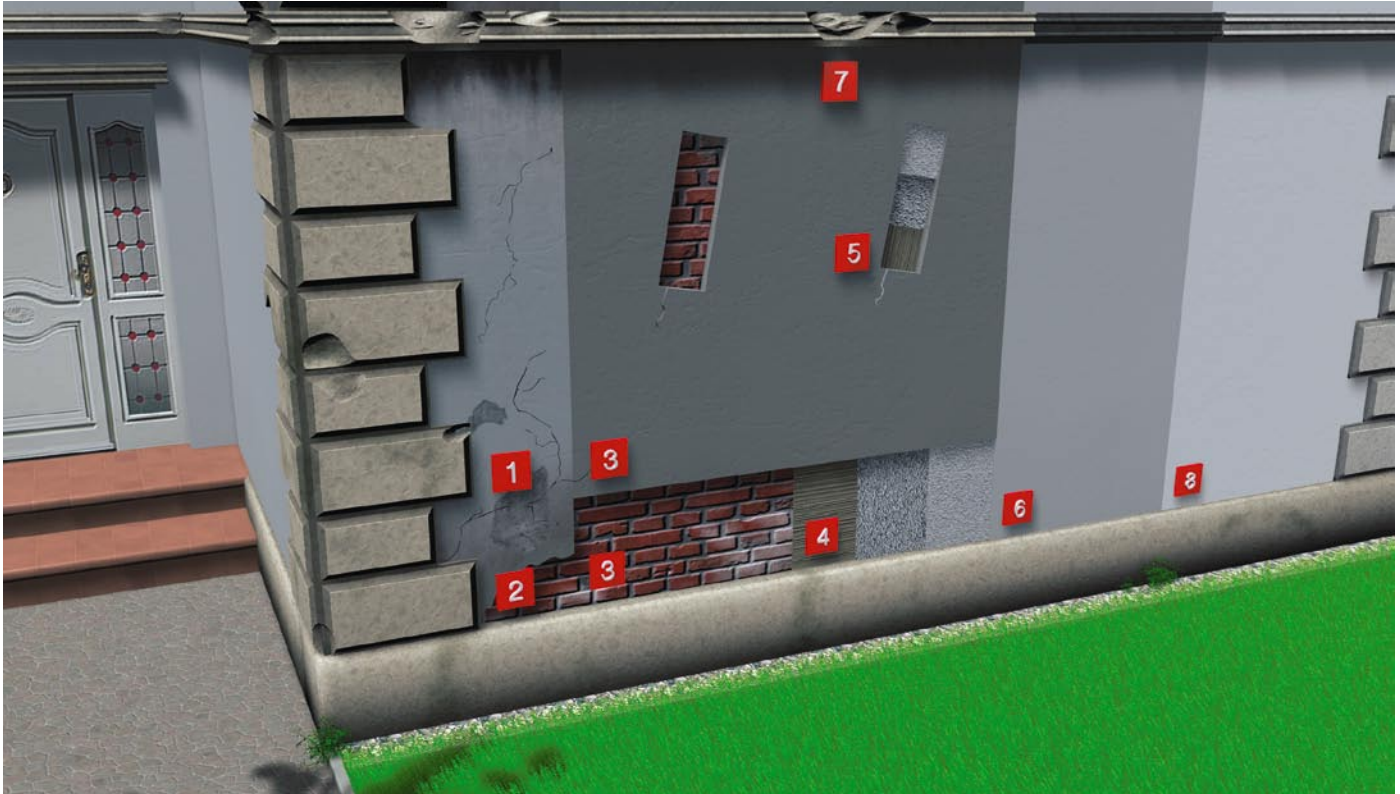


Issue date: 11/07

Rendered Facade Refurbishment



Outline Remmers System Specification

Cleaning

- Clean the rendered surfaces using appropriate Remmers chemical cleaners and cleaning equipment such as the Rotec System as determined by trials on site.

Remove Damaged Render

- Any loose and de-bonded render must be completely removed using mechanical tools.

Cracks

- Any cracks through the render must be opened, primed and sealed with Remmers Impregnation Primer and filled with Remmers Silicone Filler. (Cracks through the substrate must be treated as joints if further movement is likely).

Preventing Microbiological Growth

- Where necessary apply Remmers Impregnation BFA microbiological growth inhibitor prior to the repair and final surface treatments.

Strengthening

- Apply Remmers Silicate Strengthening Solution to consolidate the surface before commencing repair and restoration.

Levelling and Base Render

- Use Remmers Undercoat Render to fill and level out uneven areas and voids.

Finishing Render

- The surface is reprofiled and the required levels and texture obtained using Remmers Fine Render applied by hand or spray.

Coating or Scumbling

- The final protective coating or scumble is applied in a translucent or coloured finish using Remmers Silicone Paint LA.

Rendered Facade Refurbishment System and Application Overview



Cleaning

If the existing render only needs to be recoated and not replaced, thorough cleaning is still essential to ensure adhesion of the new coating. Cleaning can also help to identify areas that are de-bonded or cracked.



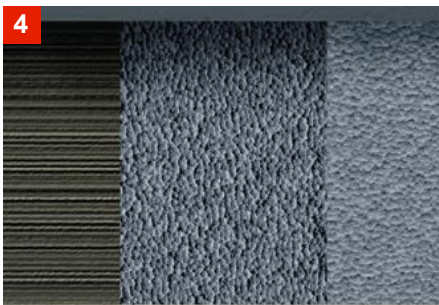
Removing the Damaged Render

If the old render is badly damaged, it must be completely removed, back to the masonry support walls.



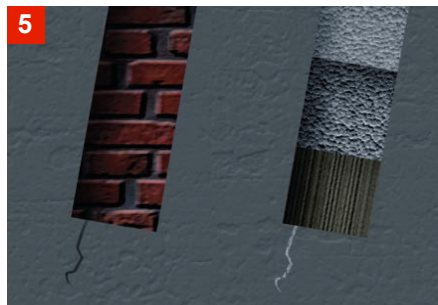
Strengthening

The render base and the old render may have to be strengthened or consolidated before carrying out further works. This can be undertaken with Remmers Silicate Strengthening solution or on Heritage buildings with Remmers KSE 300 E.



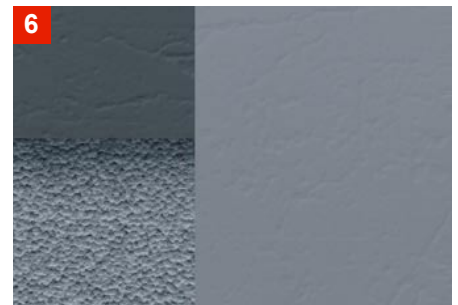
Repair and Re-rendering

The substrate must be as level as possible, so that the replacement render is of uniform thickness and cures without cracking. Uneven areas and any voids e.g. opened cracks, are first levelled with Remmers Undercoat Render. This is followed by the Remmers Preparatory Mortar and overall application of Remmers Undercoat Render.



Repairing Cracks

Static cracks in the render can be sealed by widening them, priming with Remmers Impregnation Primer and filling with Silicone Resin Filler. Larger cracks are opened (unless joint treatment is necessary) and primed with Remmers Universal Primer and rendered over with fabric scrims.



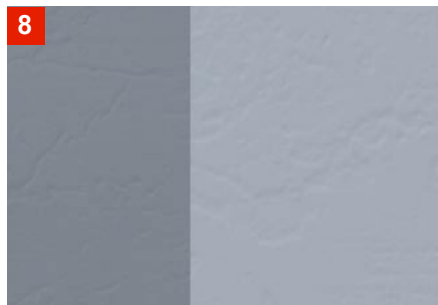
Finishing Render

The surface is levelled, smoothed and given its final texture with the mineral finishes Remmers Fine Render and Remmers Decorative Render L which are easily applied by hand or spray.



Stucco

Damaged stucco elements can either be re-touched in situ with Remmers Coarse and Fine Restoration Mortars, or removed and restored in the workshop and then re-attached later.



Coating or Scumbling

The final coating or scumbling can be opaque or transparent, using the highly vapour diffusible and water repellent with Remmers Silicone Paint LA, Remmers Historic Scumble or Remmers Mineral Silicate Paint D.

Important Note: All materials must be applied fully in accordance with the latest edition of the relevant products technical data sheet, all of which are available at www.remmers.co.uk