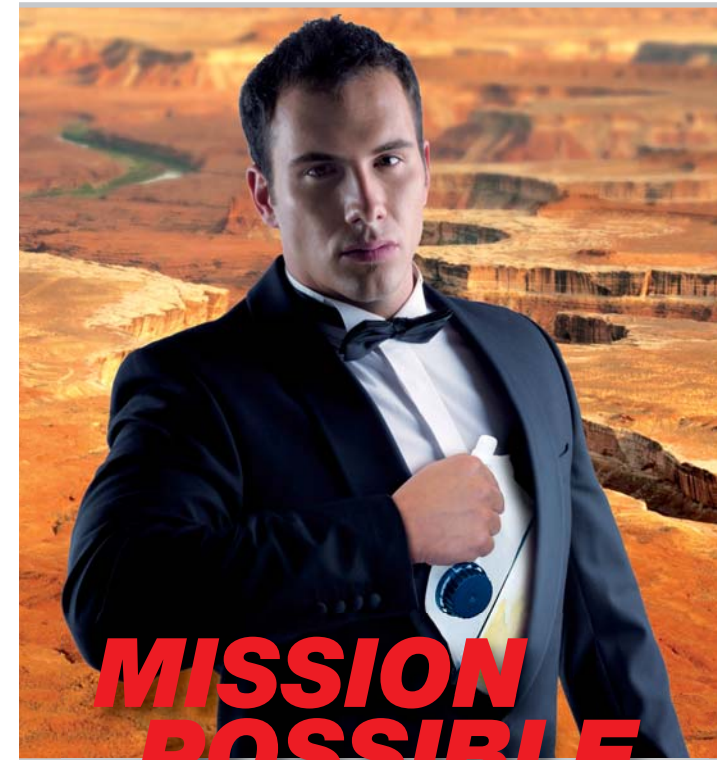


# MISSION POSSIBLE



## Epoxy Crack Fix

The Complete Set for Fast Crack Repairs



Dealer stamp

820/05.10 GB  
**Remmers (UK) Limited**  
Crawley, United Kingdom  
Tel.: +44(0) 845 373 0103  
Fax: +44(0) 845 373 0104  
www.remmers.co.uk  
**Remmers India Pvt. Ltd.**  
Gurgaon  
Tel.: +91 124 400 9131  
Fax: +91 124 400 9134  
www.remmers.in



**Remmers Baustofftechnik**  
49624 Lönningen · Tel.: +49 (0)54 32/83-0 · Fax: +49 (0)54 32/39 85

## Remmers Epoxy Repair Set in a mixing bag

### 2-component epoxy resin

In a safe, two-chamber system mixing bag

### Injection nozzle

For precise and clean application into cracks

### Quartz sand

For blinding the crack – ensures good adhesion of adhesives or coatings

### Reinforcing strips

For a better hold and more security

### Gloves

To make sure your hands stay clean





False joints



Cracks



### Advantages of Crack Fix

- Easily mixed without tools in the mixing bag
- An injection nozzle helps to fill cracks cleanly
- Can be worked over after just 60 minutes
- Cures even at 3 °C
- Substrate tolerant up to 6% residual moisture (CM method)
- High adhesive strength
- Easy disposal of remains and packaging

### Contents of the set

- 0.5 kg epoxy resin in a mixing bag
- 1.0 kg quartz sand for blinding
- 10 reinforcing strips
- 1 injection nozzle
- 1 pair disposable gloves

Further technical details are found in the latest Technical Data Sheet which can be downloaded from [www.remmers.co.uk](http://www.remmers.co.uk)



# MISSION POSSIBLE

### Notes on working



#### Content

Everything you need for filling false joints and cracks is found in the set.



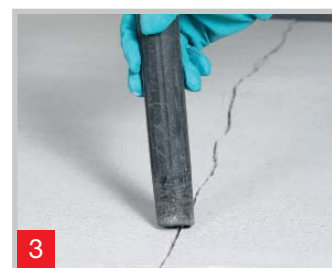
#### Preparing the crack

Cut cracks approx. 5 mm deep and widen to at least 5 mm width.



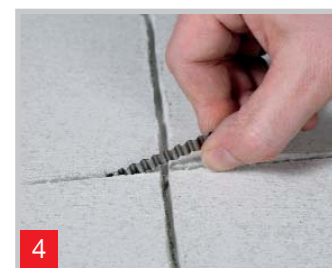
#### Preparing reinforcement

If required, cut approx. every 20 cm across the course of the crack approx. 20 - 30 mm deep (not on heated screeds)



#### Remove dust

Remove dust from the course of the crack with a high performance vacuum cleaner.



#### Insert the reinforcing strips

Insert the reinforcing strips into the cuts across the course of the crack.



#### Open the outer packaging

Tear open the outer packaging, using the tear notch.



#### Activate Crack Fix

To activate Crack Fix, remove the clip that divides the bag.



#### Mix Crack Fix

Mix the contents of the bag by applying alternating pressure on both sides for approx. 30 seconds. Mix the contents all the way into the corners until there are no streaks.



#### Mount the injection nozzle

Mount the included injection nozzle on the connector of the bag; wear the enclosed gloves.



#### Fill the crack

With the aid of the injection nozzle, fill the epoxy resin into the crack and, if required, fill again within 10 minutes.



#### Blind with quartz sand

After max. 30 minutes, blind the treated areas generously with quartz sand.



#### Remove excess material

Smooth excess epoxy resin and quartz sand with a filling knife/trowel.