

**REFERENCE**

**Pharmaceutical & Research Facility, Cambs**

**Application Field**

- Floor coating – water vapour diffusion open systems
- Floor coating – conductive systems
- Floor coating –decorative systems

**Structure Type**

- Industrial buildings / halls

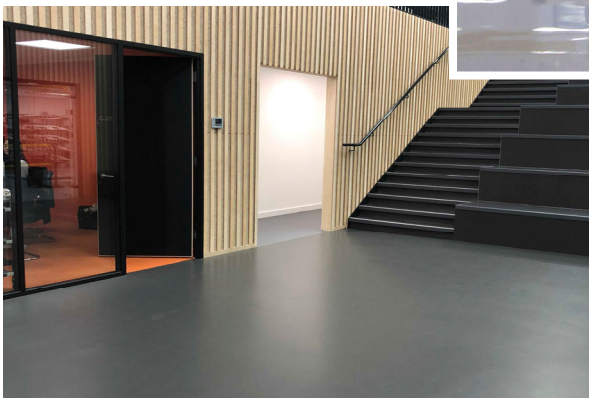
**Brief Description**

In order to evolve the next-generation surgical robot, a new 42,000 square foot pharmaceutical research facility required development to accommodate its rapidly growing, highly skilled team and equipment.

The new headquarters now houses it's entire company - including engineering, research, manufacturing, clinical and commercial teams. The space also includes laboratories, test and final assembly facilities.

**Products and Systems Used**

- Epoxy MT100
- Epoxy FAS100
- Epoxy ESD 3K
- Epoxy BS3000 SG
- PUR Deco Color Bright
- PUR Aqua Color Top M
- PUR Aqua Top M



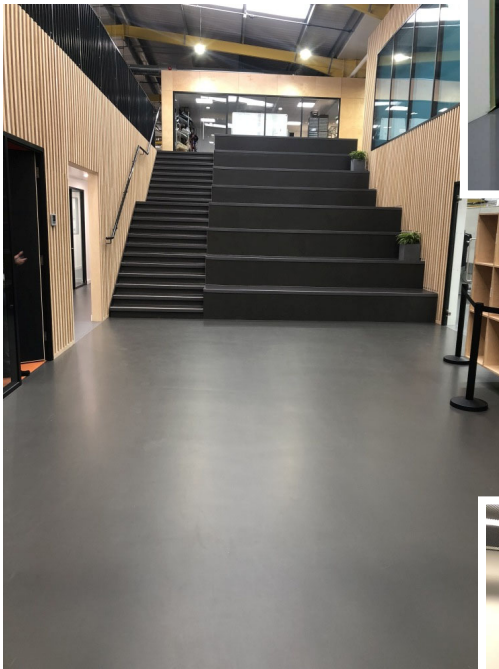
Flooring was required to the robot build and store areas as well as the Goods-In, main 'street' and restaurant.

Pharamceutical & research Facility – 05.2019

## Main Problem and Requirements

Initially the client needed to create an anti static ESD protection area for storage and maintenance of hi-tech robotics equipment that is being developed for use in the healthcare industry.

The Client was so impressed with the successful installation, they engaged us to provide a solution to the main thoroughfare through the new facility.



They required a minimalist, clean, durable floor to compliment their ultra modern décor that could be colour matched to sheet products that were to encase the stepped seating areas.



The flooring also needed to resist the wear and tear in a busy canteen area.

## Specifier

CMR & WMB Studio

## Contractor

East Coast Flooring

## Completion

2018