

Technical Information Sheet
Article No. 4350-4351

Product Information

Remmers Pipe Flange – Instructions for Installation

Waterproofing system for pipes passing through walls against water pressure

1. Substrate

The substrate must be dry, plane and free of oil, grease and release agents. Remove cement grout, especially on masonry work and concrete. Roughen the surface of the wall and the pipe in the areas that will be cemented and remove dust. The pipe that passes through the wall must be fixed in place (with mortar or foam) so that it does not move when the pipe flange is mounted.

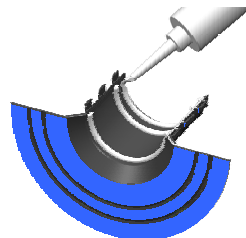
2. Applying the flange cement

Mark the exterior diameter of Remmers Pipe Flange on the wall, using a half-shell as a pattern. Cut off the tip of the cartridge at a diameter of 2 mm and apply the adhesive to the edges of Remmers Pipe Flange (III. 3).



III. 3 – application of adhesive to the edges of the pipe flange

Then cut the tip of the cartridge off at approx. 8 mm diameter and apply several strands of adhesive inside the two 15 cm high half-shells (III. 4). The strands of adhesive are then evenly distributed with the enclosed toothed filling knife to a layer approx. 3 mm thick.



4 – application of adhesive inside the pipe flange

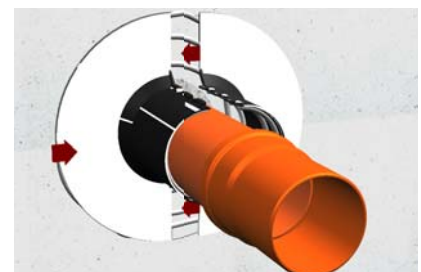
Apply the first strand of adhesive along the inside edge of the circle drawn on the substrate. Then apply two further strands, one around the edge of the pipe and a second strand in the middle between the two strands (III. 5).



III. 5 – application of the adhesive to the wall

3. Mounting the pipe flange

Bring the two half-shells together around the pipe, clip together and while slightly turning, push against the substrate until a bit of the adhesive becomes visible around the edge of the shell. Make sure that the grooves of the half-shells are completely interlocked (also in the flat shell area (III. 6))



III. 6 – leading the half-shells together

Please observe the notes on working and see the Safety Data Sheet for Remmers Pipe Flange Adhesive!

The statements above are compiled from our field of production and according to the latest technological developments and application techniques. Since application and working are beyond our control, no liability of the producer can be derived from the contents of this product information sheet.

The statements above are compiled from our field of production and according to the latest technological developments and application techniques.

Since application and working are beyond our control, no liability of the producer can be derived from the contents of this information sheet. Any statements made beyond the contents of this information must be confirmed in writing by the producer.

In all cases, our general conditions of sale are valid. With the publication of this Technical Information Sheet all previous editions are no longer valid.



Remmers (UK) Limited Crawley
United Kingdom
Tel: +44(0) 845 373 0103
Fax: +44(0)845 373 0104
www.remmers.co.uk

Remmers (Far East) Pte. Ltd.
Singapore
Tel: +65 6 7410277
Fax: +65 6 7417158